



PRRIP – ED OFFICE MEMORANDUM

TO: GOVERNANCE COMMITTEE
FROM: EXECUTIVE DIRECTOR'S OFFICE
SUBJECT: TRACT 1804 EVALUATION SUMMARY AND RECOMMENDATION
DATE: NOVEMBER 30, 2018
CC: LAND ADVISORY COMMITTEE

I. REQUESTED GOVERNANCE COMMITTEE ACTION

The Land Advisory Committee (LAC) requests that the Governance Committee (GC) approve the initiation of formal negotiations for acquisition of tract 1804. The LAC also requests that the GC assign the negotiations to the Executive Director's Office and provide the Executive Director with instruction on acceptable acquisition terms.

II. LAC RECOMMENDATION

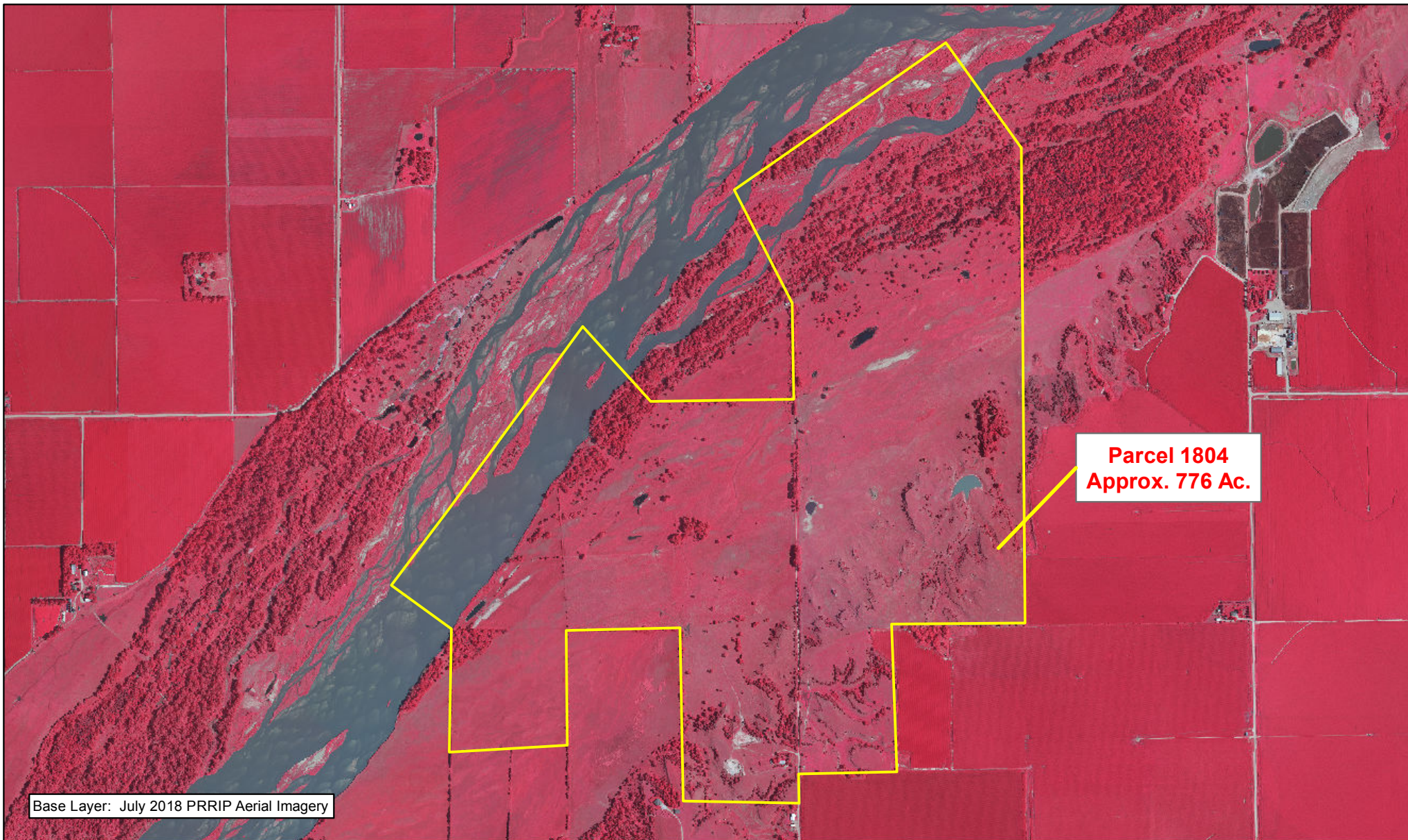
On October 29, 2018, the LAC voted to accept the evaluation team's recommendation and forward Tract 1804 to the GC with a recommendation to pursue acquisition of this tract as complex habitat counting towards the First Increment Extension. LAC discussion cited the overall quality of the tract for target species and its location as a potential new complex in a priority bridge segment for the First Increment Extension.

III. TRACT DESCRIPTION

Tract 1804 is approximately 776 acres in size and is located in Sections 11, 14 & 15, T-11N, R-8W (Figure A-1). The tract is located in the Highway 34 to Chapman bridge segment (Figure A-2).

IV. HABITAT CONSIDERATIONS

The evaluation team recommends that the entire tract be considered as complex acres. Tract 1804 would be a great anchor for a new PRRIP complex in the Highway 34 to Chapman bridge segment, a priority area for the First Increment Extension habitat goals. The tract has significant river frontage with good channel widths, as well as large wet meadow area that has been managed well. The tract does not require a great deal of additional restoration or changes to management to meet Program objectives. At the discretion of advisory committees, some tree clearing could occur to open up additional wet meadow area and increase unobstructed channel widths for parts of the tract. This tract also has several areas that may be suitable for the Program's goal to provide 10 acres per year of in-channel least tern & piping plover habitat, although in-channel property boundaries for this tract carry significant uncertainty and will need to be identified during the acquisition investigation and negotiations.



PLATTE RIVER
RECOVERY IMPLEMENTATION PROGRAM

Legend



1804



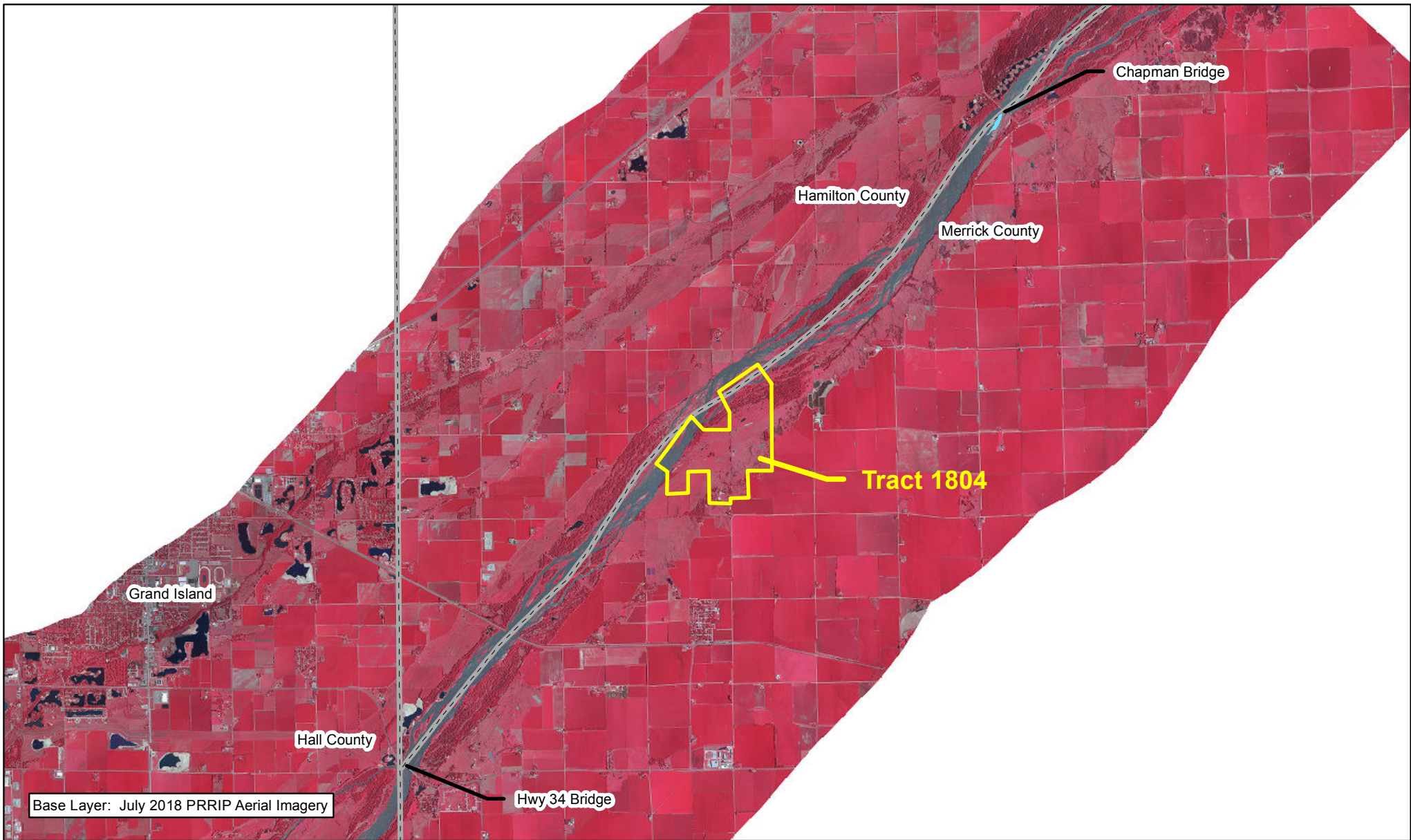
0.5 Miles

0.5

TRACT 1804 BOUNDARY MAP

Parcel Evaluation
Date: 10/18/18
By: JDB

Figure A-1



Legend

| | | |
|-----------------|---------|-------|
| 1804 | Audubon | PRRIP |
| County | CNPPID | PRWCT |
| Ducks Unlimited | TNC | USFWS |
| NGPC | | |
| NPPD | | |



Miles
2

TRACT 1804 LOCATION MAP

Parcel Evaluation
Date: 10/18/18
By: JDB

Figure A-2